



Value Proposition

Strictly confidential material for internal use only



Every year in the world, approximately 30% of energy consumption, amounting to

\$1.624B¹

is wasted due to inefficiency, corresponding to

7,04B² tons of CO₂
released into the environment

1. This value is calculated starting with an internal estimation of the average of 30% of energy wasted for the buildings, equal to 10.833 TWh (<https://www.iea.org/reports/buildings>) and an average cost of 0,15\$ cost for a KWh

2 This value was calculated from a 30% internal estimate of building energy expenditure of 10,833 TWh (<https://www.iea.org/reports/buildings>) and a unit estimate of CO₂ emission of 0.65 kg for each KWh of energy produced

#noplanetb

Do you know how much energy you waste?

Are you adopting the best cost reduction strategies?

Contact OVER

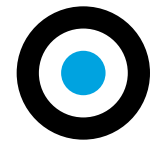
overttechnologies.com

OVER vision

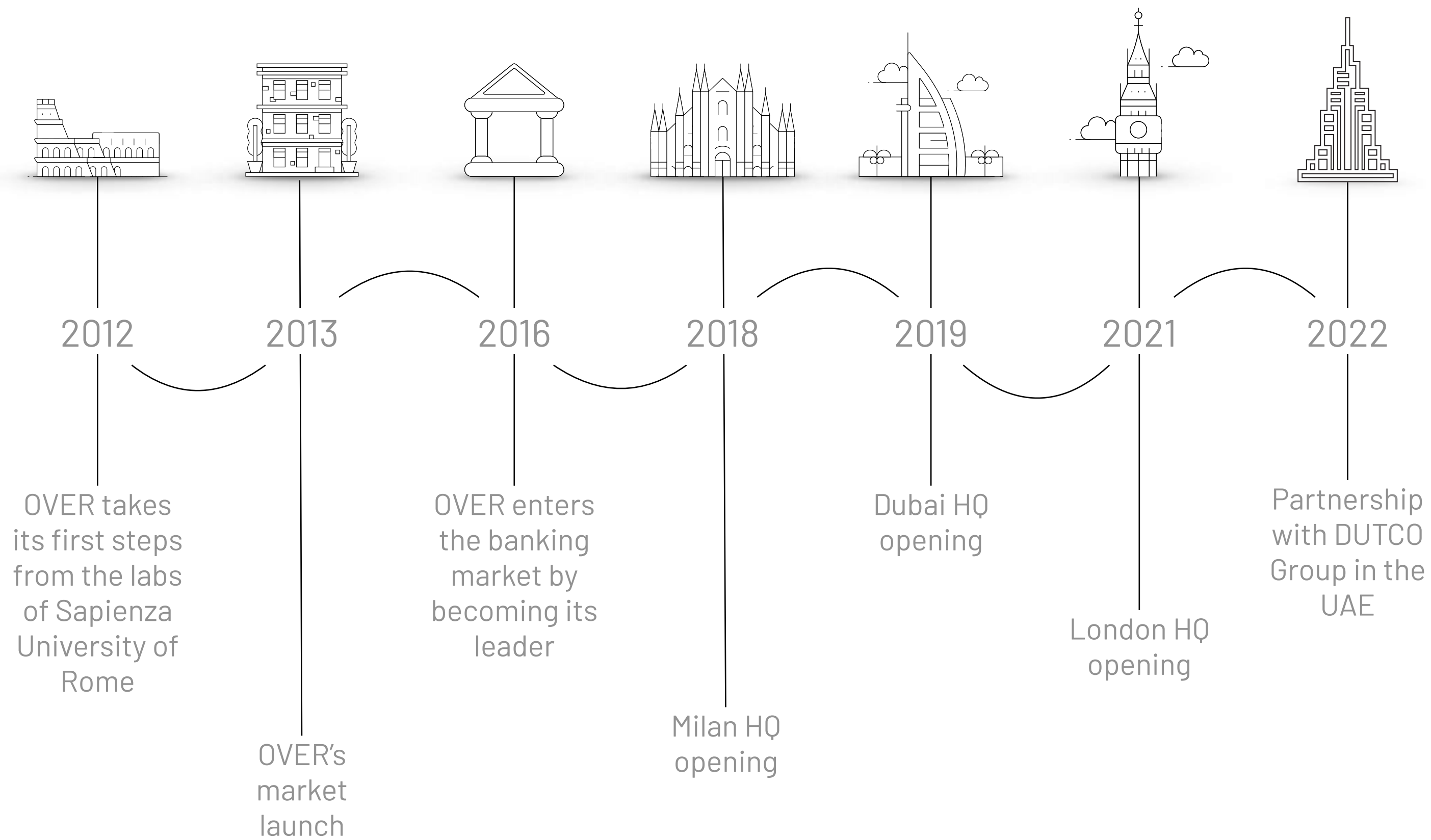
The leading technologies for a sustainable tomorrow

We have always had [the ambition to make a difference in building a better future](#), by developing innovative and sustainable technologies that improve people's quality of life within buildings, while reducing unnecessary costs and the waste of valuable resources for businesses.

Now, [we have the responsibility](#) to help others invest in our vision and technologies, in order to build a more sustainable world.



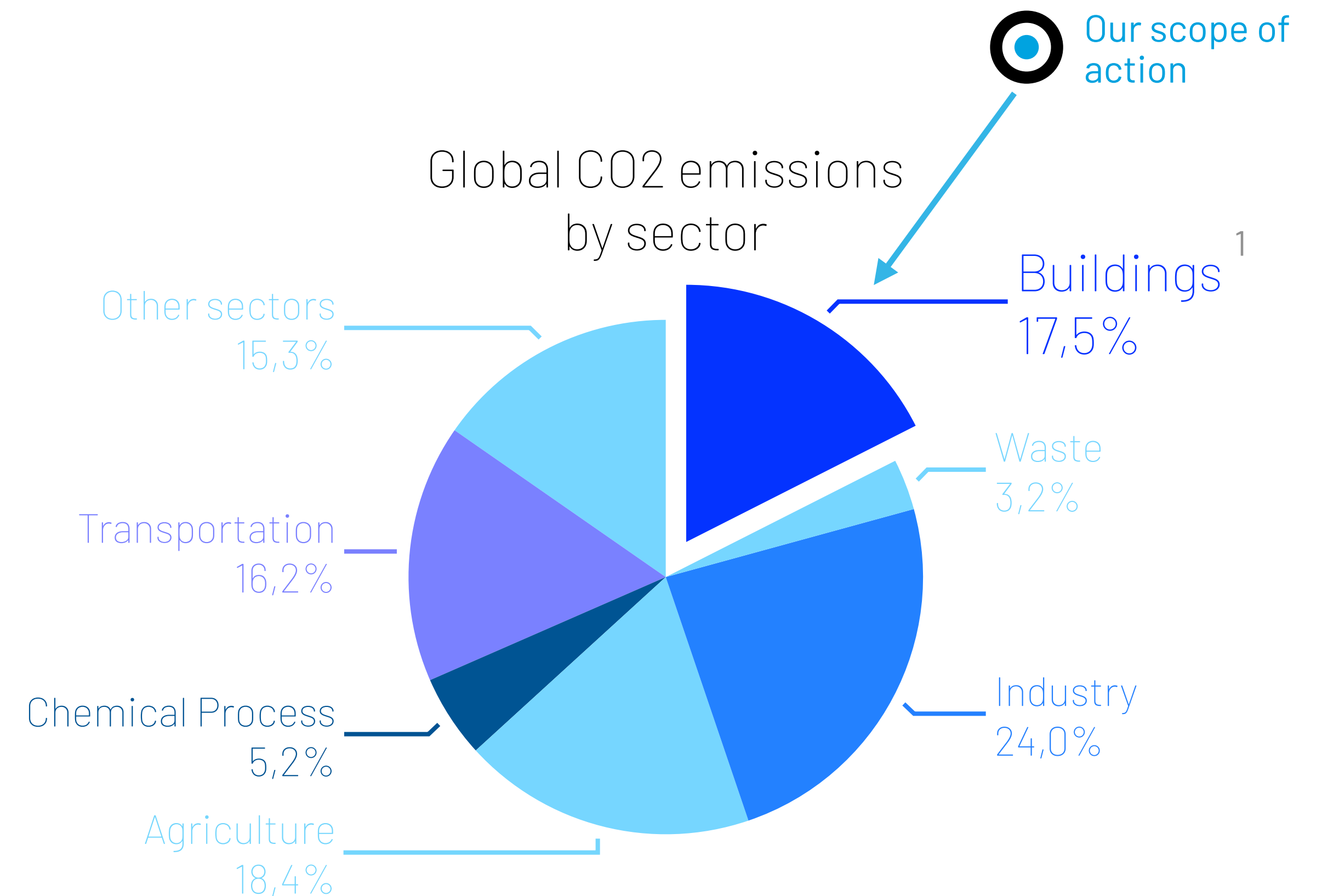
OVER History



OVER's goal

To help your company reduce **energy consumption** by up to **30%** and **CO₂ emissions** by up to **50%**, contributing significantly to:

- reducing **environmental impact**;
- **increasing sustainability**
- **improving well-being** and comfort in indoor environments.



¹2020 data from the Observatory on Renewable Energy and Energy Efficiency (OER)

OVER's numbers

In 10 years of history, we have helped over **7,000 buildings** to...

- save up to **30% on energy** consumption
- **digitize and remotely control** buildings
- **monitor and improve** air quality



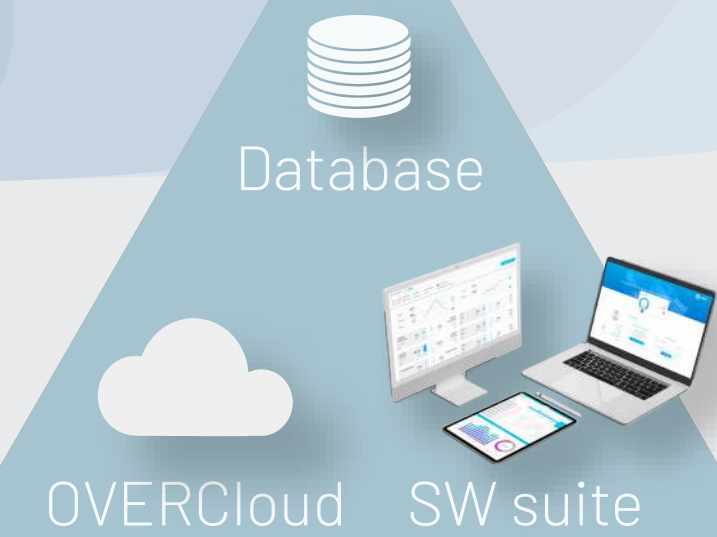
➔ **+7.000 real estate** managed to date ➔ **+170 GWh** saved ➔ **+74,475 metric tons** of CO2 saved ➔ **+€40.000.000** saved

To date, we possess **the largest dataset in Europe**, allowing us to mathematically estimate the precise amount of savings **we can guarantee for you**.

OVER's solutions - the puzzle

Software Suite

Developed and available in the cloud to ensure scalability, security, and 99.9% availability.



Gateway

The OBox, an embedded mini PC that allows for connecting field devices to the cloud.



On-field devices

IoT (Internet of Things), meters, sensors, and actuators to monitor and manage your remote buildings.



OSensor



AirFrame®



Octopus



OMeter



NanOMeter

OVER's solutions - the pieces of the puzzle



OverBoard



Visyon



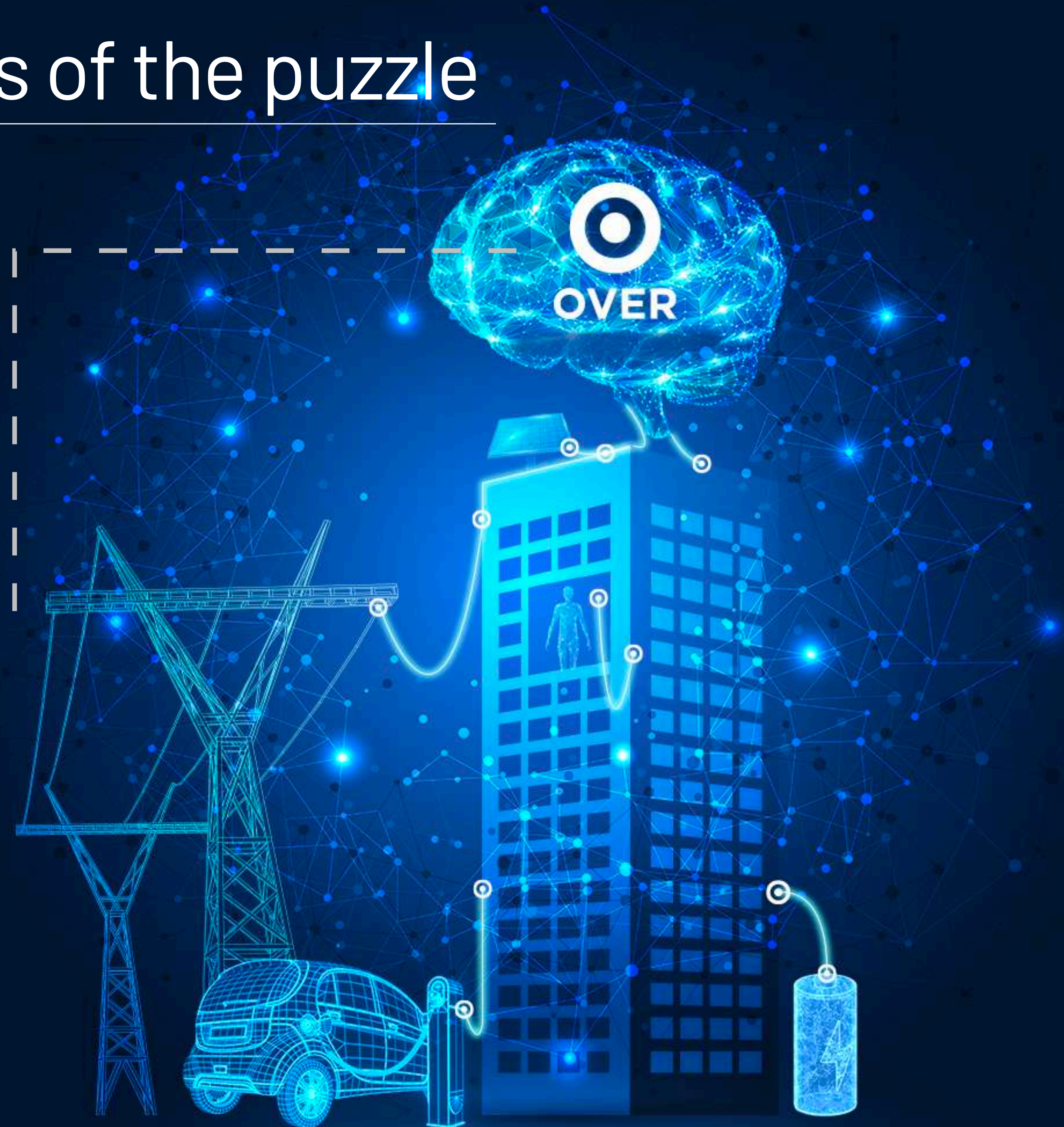
He.Co
(beta version)



ARGO
(beta version)

Software Suite

Allows you to remotely control and monitor your buildings, providing you with both real-time data and historical data and KPIs



OVER's solutions - the pieces of the puzzle

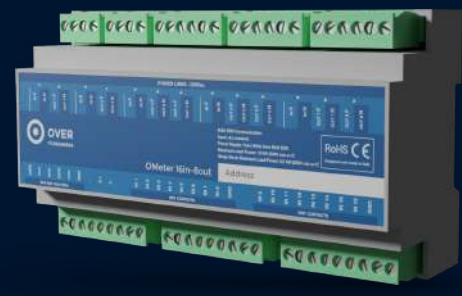


OBox

The gateway for secure management of all communications between field devices and cloud platforms



OVER's solutions - the pieces of the puzzle



OMeter

Energy Monitor and control of the energy loads connected to it



NanoMeter

Static counter of active and reactive energy for three-phase systems



Octopus

A small device able to connect to third-party systems and sensors already installed in the buildings



OVER's solutions - the pieces of the puzzle



OSensor

The most advanced real-time air quality monitoring device to measure: Temperature, Humidity, CO₂, CO, PM₁, PM_{2.5}, PM₁₀, VOC, Formaldehyde, air pressure



AirFrame[®]

Air purifier with **patent** pending CrossField[®] technology (medical-grade) and an OSensor inside



Advanced cyber security measure

The system has **three levels of security**:

- **Physical security:** the entire infrastructure is hosted within the Amazon cloud, which adheres to the highest security standards.
- **Cyber security:** all protocols within the infrastructure use encryption with the latest standards. All passwords are at least 16 characters long, randomly generated, unrelated to each other, and changed periodically. Virtual instances for data processing and storage utilize images from AWS repositories.
- **Gateway security:** the security of OBox is ensured by the fact that incoming connections are not allowed. Therefore, even if a hacker were to attempt to tamper with the machine, they would still be unable to use it to attack the cloud infrastructure.



What can we do for you

Area of optimization



Lighting and FM management

Lighting monitoring and control,
FM monitoring and control



Clima control management

Chiller plant monitoring and control
Direct expansion system monitoring and control



Water management

Hot water monitoring and control



Air Quality

Air Quality and AHU

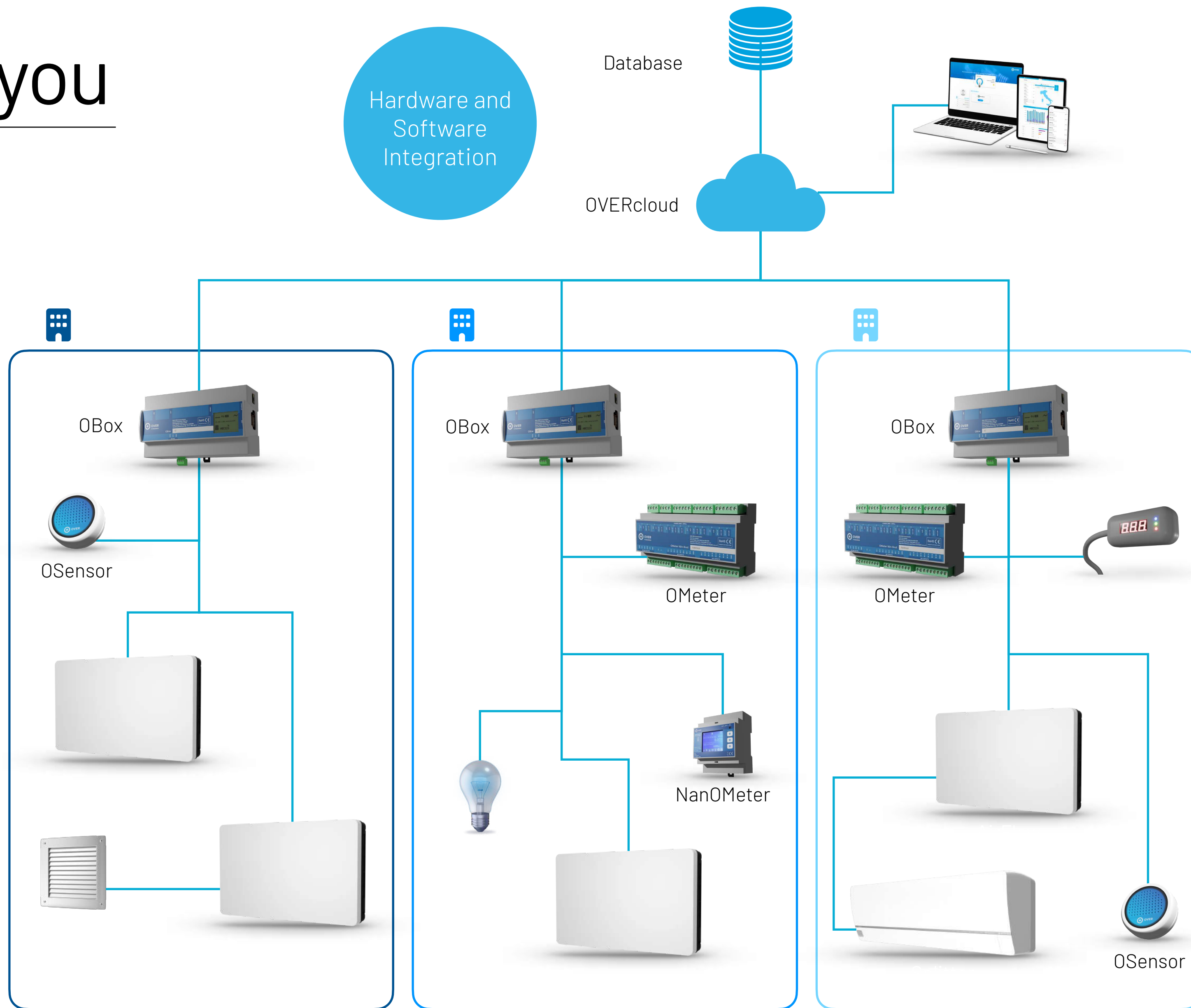
Hardware and Software Integration

Database

OVERcloud

Software

Hardware



What can we do for you

Our system

- [Real-time monitoring of energy consumption](#) for all electrical systems in your building, including lighting, air conditioning, and heating systems
- Analysis of consumption data to identify areas where energy efficiency can be improved, enabling targeted measures to [further reduce costs](#)
- [Automation and centralized control of systems](#) to reduce energy consumption, such as conditioning systems based on external temperature and thermal latency of the building
- Provision of preliminary information regarding failures to reduce maintenance time and costs
- Monitoring and management of [Indoor Air Quality](#)



What can we do for you

Our services

- [Energy Manager as-a-service](#): Assessment of the real energy and economic benefits of interventions in compliance with the IPMVP standard
- [Energy audit](#): Evaluation of the energy performance of your buildings and identification of improvement opportunities
- Support for [building certification activities](#) (es. LEED, GREB etc)
- Support for submitting applications for [subsidized financing](#)
- [Consultancy](#) on air quality management
- Installation of [conditioning systems](#)
- [Tailor-made solutions](#) to assist you in managing your building



What can we do for you

Control Room

Highly specialized personnel to:

- implement [energy management strategies](#) across all sites
- ensure effective and efficient system management
- [support installation](#) and configuration operations
- [update building management rules](#) (e.g., changing the signage activation time based on the season)

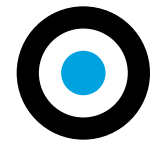


Customer Journey

OVER, the complete turnkey solution that is **easy to install and manage**

In the challenge of energy management, we develop data-driven and dynamic solutions to improve savings year after year.





A focus on
sustainability



Sustainability report

The [EU Directive 2022/2464](#) modifies the terms for the obligation of "non-financial information disclosures," effective from:

- **January 1, 2024**, for companies already subject to the Non-Financial Reporting Directive (NFRD)(reporting in 2025 for the 2024 financial year).
- **January 1, 2025**, for large companies (250 employees, €50 million turnover, and at least €43 million balance sheet total) currently not subject to the NFRD (reporting in 2026 for the 2025 financial year).
- **January 1, 2026**, for listed SMEs (excluding micro-enterprises), small and non-complex credit institutions, and captive insurance companies (reporting in 2027 for the 2026 financial year).
- **January 1, 2028**, for non-European companies that generate net revenues from sales and services exceeding €150 million in the EU, if they have at least one subsidiary or branch in the EU that exceeds certain thresholds (reporting in 2029 for the 2028 financial year).



Efficient energy systems and sustainability balance sheet

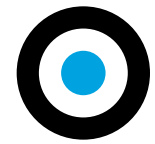
OVER solutions are your ally in preparing the sustainability balance sheet because they:

- Ensure a **Lower Environmental Impact**, they promote greater energy efficiency, reduce energy consumption, and decrease CO₂ emissions.
- Provide **Greater Saving Opportunities**, they reduce building management costs and energy bills, freeing up financial resources for other sustainable projects.
- Increase **Environmental Awareness** among employees and building occupants, fostering a community that is more environmentally conscious.
- Offer **Enhanced Transparency and Accountability**, through real-time data collection on energy consumption and environmental impact, they contribute to the transparency and accountability aspects of the sustainability balance sheet.
- **Improve Corporate Reputation**, the adoption of energy-efficient technologies enhances the company's reputation, making it more attractive to consumers and potential investors who prioritize environmental considerations.

Air quality and sustainability balance sheet

How **OVER solution** can contribute to the sustainability balance sheet:

- **Contribution to Improved Health and Well-being of Occupants:** By monitoring and managing air quality, it contributes to enhancing the health and well-being of building occupants, reducing the risk of respiratory diseases and other health issues related to air pollution.
- **Compliance with Regulatory Requirements:** It helps maintain regulatory compliance, ensuring that the building meets environmental and health and safety requirements.
- **Greater Saving Opportunities:** The adoption of air quality monitoring and management systems can help reduce HVAC maintenance and repair costs, extend the lifespan of the system, and lower energy costs.
- **Increased Environmental Awareness:** It fosters environmental awareness and a culture of sustainability among employees and building occupants, creating a community that is more sensitive to environmental issues.
- **Enhanced Corporate Reputation:** The adoption of sustainable technologies such as air quality management and monitoring systems can improve the company's reputation, making it more attractive to consumers and potential investors who prioritize environmental considerations and enhancing the sustainability balance sheet.



Some examples
of savings



Light and outlet control

Do you know how much energy **you can save** just by smart control of lights and outlets?

15%

How can the OVER system achieve this?

- By automating the on/off control of lights and outlets based on time schedules.
- By automating the on/off control of signs based on scheduling.
- By receiving alerts in case of malfunctioning signs or loads.

The installation of the OVER system does not require structural work. It simply involves adding the OVER panel to your main electrical panel.



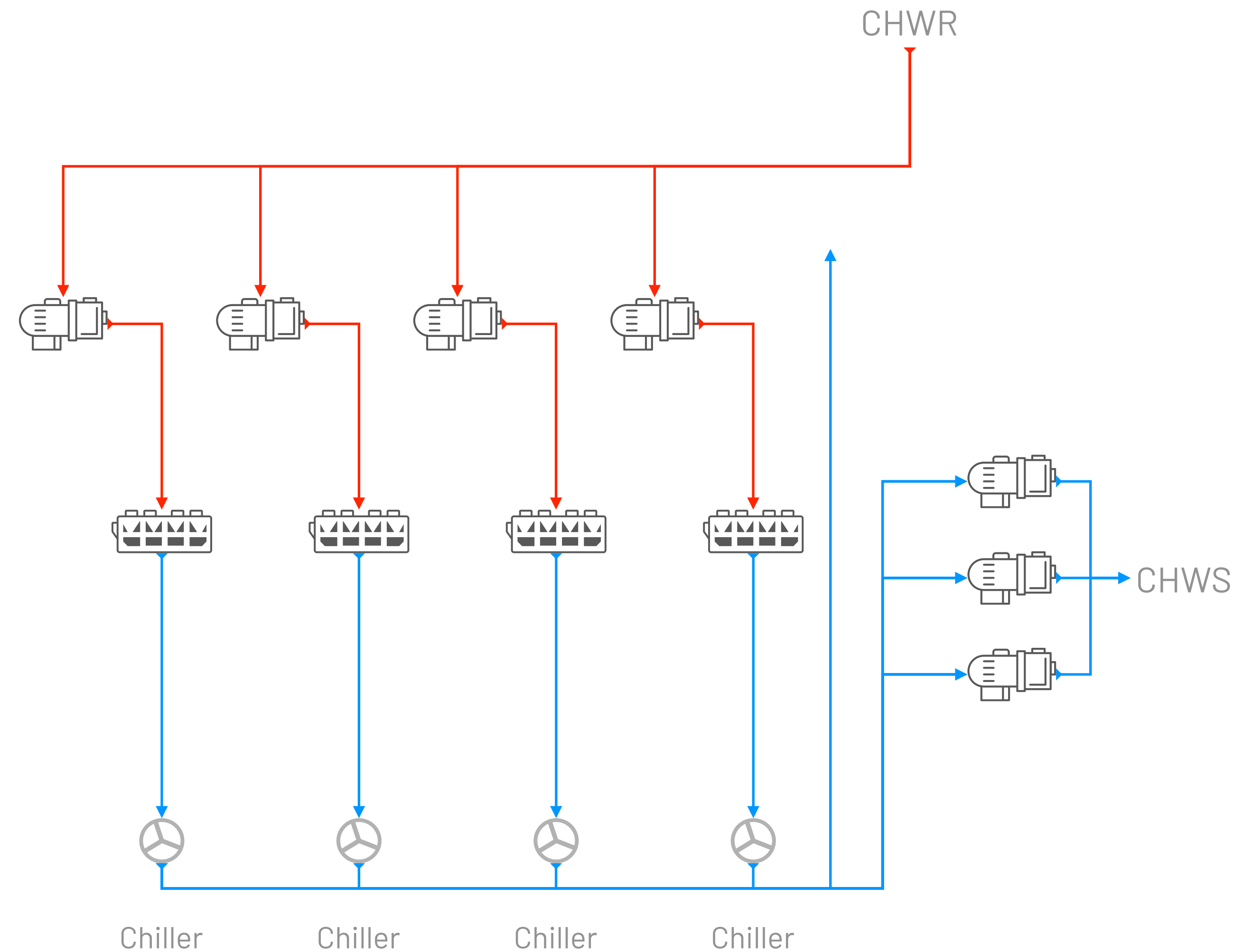
Optimization of air conditioning systems

Do you know **how much energy you can save** with the optimization of air conditioning systems?

Up to 20% of potential savings.

How can the OVER system achieve this?

- By adjusting the air conditioning systems to maximize energy efficiency without compromising comfort levels.
- By monitoring operational data of the cooling system, including environmental and load factors.
- By adjusting the system activation based on external temperatures, building thermal lag, and target temperature.



The benefits of OVER solutions

OVER solutions have demonstrated the following benefits for our clients:

- [Energy consumption reduction](#) - saving money and reducing CO2 emissions!
- [Improved air quality and more comfortable environments](#), which have been shown to increase employee productivity and serve as effective marketing tools.
- [Achievable return on investment \(ROI\)](#) within 12 months.
- [Up to 30%](#) reduction in maintenance ticket generation for systems.
- Centralized and remote smart management capabilities



Who has chosen OVER





Rome

Sante Bargellini 62,
Rome (RM)
Italy

Milan

Viale Piemonte 37,
Cologno Monzese (MI)
Italy

Dubai

Office n. 124, Bldg 8,
Dubai Media City,
UAE

London

Great Portland Street 85,
London W1W 7LT
UK

info@overttechnologies.com